

Art Direction

"To make the game look polished and professional."



Thomas Vasseur
Jain

Privacy Choices

We and our third-party partners use cookies or similar technologies to store and/or access information on your devices in order to process personal data such as device identifiers and browsing data. (View our [94](#) partners.) This enables us to serve relevant content and advertising to you, and to improve the service that we provide. You can review our [Privacy Policy](#) for more information on how we collect and use your data.

You have a choice in how your data is used. You may consent to the processing of your data for the purposes listed below. This consent only applies to the scope of our service. You can configure your preferences before consenting, or refuse to consent. If you don't consent, the content and advertisements you see may be less relevant.

You can also review where our partners claim a legitimate interest to use your data and, should you wish, object to them doing so here. Your objection will apply to the scope of our service. You can withdraw your consent at any time using the Privacy Choices link found at the bottom of each website page or in our application settings.

We and our partners use cookies and similar technologies for the following purposes:

Store and/or access information on a device



Personalised advertising and content, advertising and content measurement, audience research and services development



Use precise geolocation data



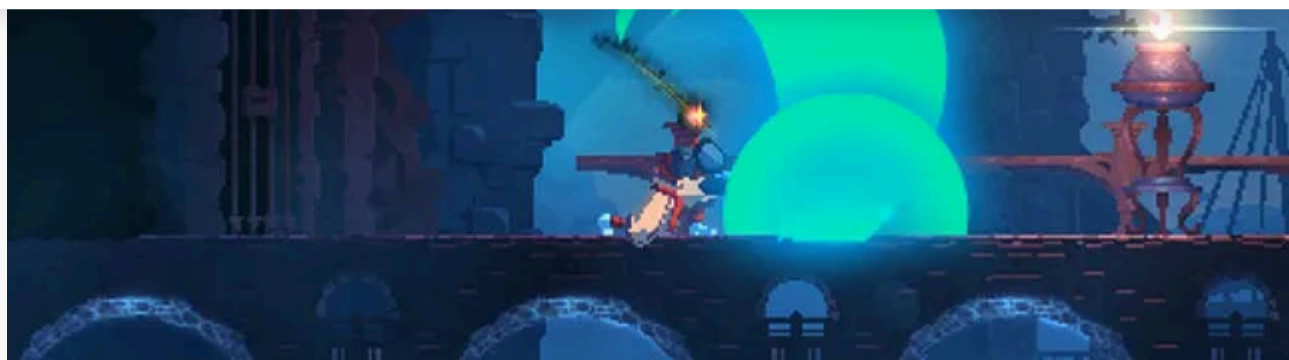
Actively scan device characteristics for identification



Accept All

Reject All

Manage Preferences



*The Gamasutra Deep Dives are an **ongoing series** that aim to shed light on how specific design, art, or technical features within a video game come to be, in order to show how seemingly simple, fundamental design decisions aren't really that simple at all.*

*Check out **earlier installments**, including creating drama through a multitude of simple tasks in **Bomber Crew**, or maintaining player tension levels in **Nex Machina**, and achieving seamless branching in **Watch Dogs 2's** Invasion of Privacy missions.*

Who: Thomas Vasseur, artist at **Motion Twin**

Hello friends,

"Big dreams yet limited means" could be the motto of pretty much all indie teams out there. It certainly was mine when I began work on our first steam game, [Dead Cells](#), here at Motion Twin.

My name is Thomas Vasseur and for one year, I was the only artist on *Dead Cells*, designing and animating every aspect of the game. I was in charge of the Art Direction, characters, monsters, animations, special effects (FX) and most of the background of *Dead Cells* all on my lonesome... Until, fortunately, my evil twin [Gwenael Massé](#) came to help, factually doubling the number of artists on *Dead Cells*.

However, since being understaffed is a common reality in our sector, I think you might be interested in learning how I managed to stay sane during my time alone in the trenches. Assuming I'm still alive and all of this is not just an illusion.

What: A 3D workflow to design qualitative animations and new models – fast

I began by drawing a very basic 2D pixelart model sheet, which I use as a base creating the character and its skeleton in 3D (with 3DS Max), then I export it in filmbox format. The 3D modeling is very basic and would probably make the eyes of any credible 3D artist bleed.

Privacy Choices

We and our third-party partners use cookies or similar technologies to store and/or access information on your devices in order to process personal data such as device identifiers and browsing data. (View our [94](#) partners.) This enables us to serve relevant content and advertising to you, and to improve the service that we provide. You can review our [Privacy Policy](#) for more information on how we collect and use your data.

You have a choice in how your data is used. You may consent to the processing of your data for the purposes listed below. This consent only applies to the scope of our service. You can configure your preferences before consenting, or refuse to consent. If you don't consent, the content and advertisements you see may be less relevant.

You can also review where our partners claim a legitimate interest to use your data and, should you wish, object to them doing so here. Your objection will apply to the scope of our service. You can withdraw your consent at any time using the Privacy Choices link found at the bottom of each website page or in our application settings.

We and our partners use cookies and similar technologies for the following purposes:

Store and/or access information on a device

Personalised advertising and content, advertising and content measurement, audience research and services development

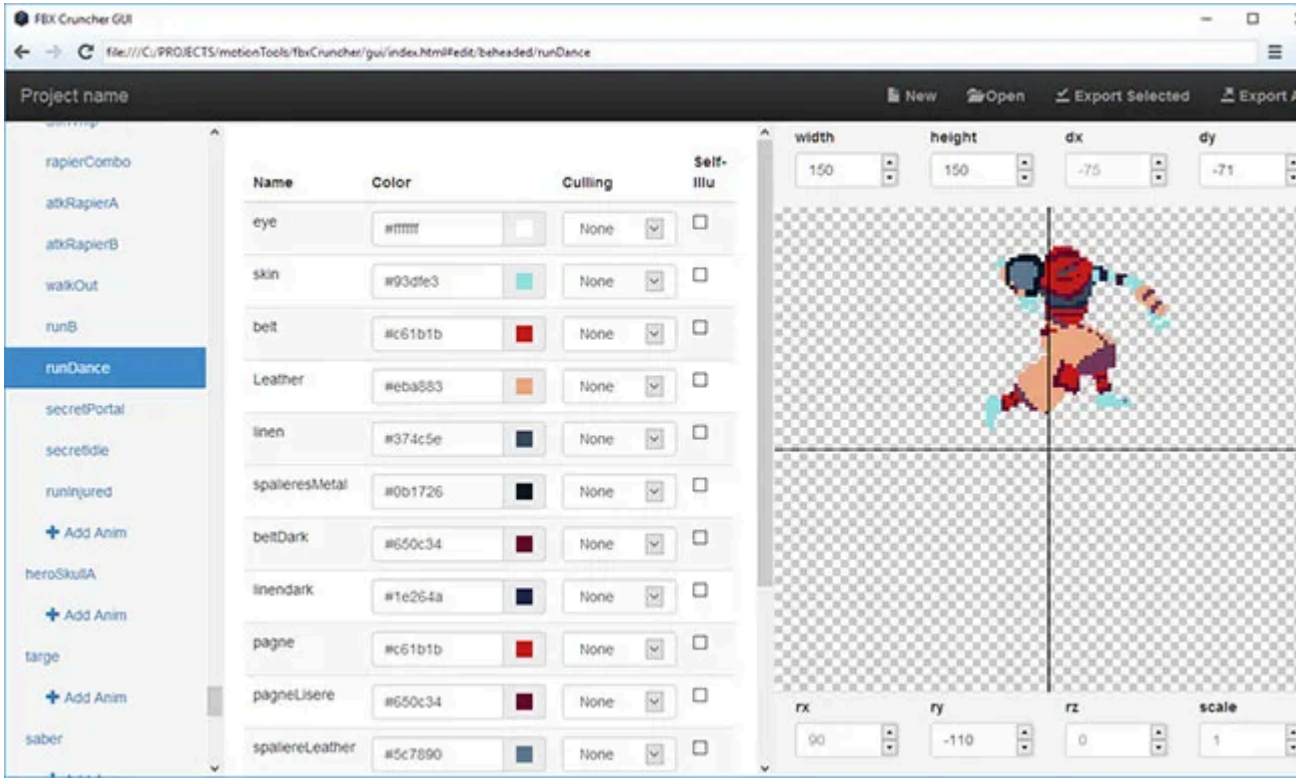
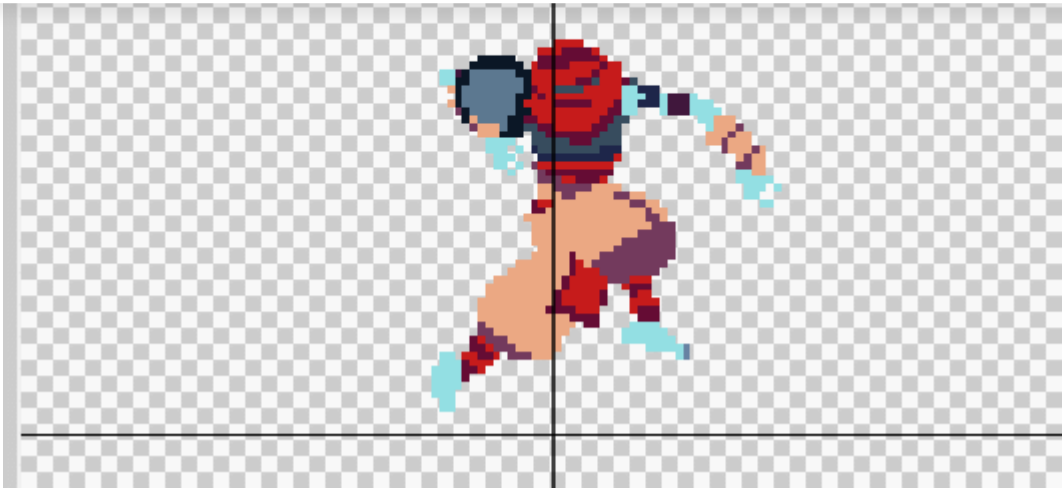
Use precise geolocation data

Actively scan device characteristics for identification

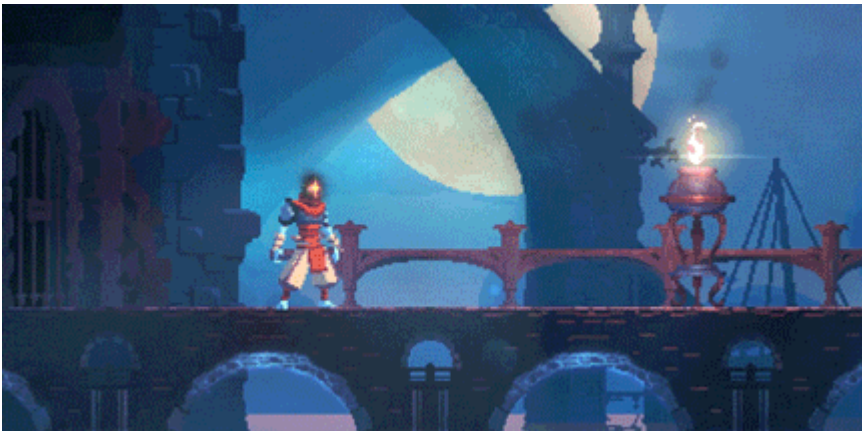
But when energy of

A little how without a

and



Now, it's time to make the model move. *Dead Cells*' animations are designed, like 2D animations, on key frames. Once, and only once, the animation is convincing and correctly timed with the least amount of frames possible, I add interpolation frames before or after the key frames. Never in-between. Therefore, our attacking animations are essentially pose-to-pose animations, and we utilize VFX to give a sense of movement, impact and strength.



Privacy Choices

We and our third-party partners use cookies or similar technologies to store and/or access information on your devices in order to process personal data such as device identifiers and browsing data. (View our [94](#) partners.) This enables us to serve relevant content and advertising to you, and to improve the service that we provide. You can review our [Privacy Policy](#) for more information on how we collect and use your data.

You have a choice in how your data is used. You may consent to the processing of your data for the purposes listed below. This consent only applies to the scope of our service. You can configure your preferences before consenting, or refuse to consent. If you don't consent, the content and advertisements you see may be less relevant.

You can also review where our partners claim a legitimate interest to use your data and, should you wish, object to them doing so here. Your objection will apply to the scope of our service. You can withdraw your consent at any time using the Privacy Choices link found at the bottom of each website page or in our application settings.

We and our partners use cookies and similar technologies for the following purposes:

Store and/or access information on a device

Personalised advertising and content, advertising and content measurement, audience research and services development

Use precise geolocation data

Actively scan device characteristics for identification



At this point, most of the work is done. We export each frame of the animation we made with the 3D skeleton to a .png, along with its normal map, allowing us to render the volume using a basic toon shader.



Exporting the whole as a sequence of frames also allows us to slip in a blend mode or two for an added wow effect.



Of course, these damn gameplay programmers can never get anything right the first time... They are always changing their minds. Which they actually should, really. In this case, my process for handling retakes is fairly simple demanding very little time. If the timings are the issue, moving the keyframes in the timeline will do the trick. Changing the pose isn't really a problem either.

Let's say that

bit.

Privacy Choices

We and our third-party partners use cookies or similar technologies to store and/or access information on your devices in order to process personal data such as device identifiers and browsing data. (View our [94 partners](#).) This enables us to serve relevant content and advertising to you, and to improve the service that we provide. You can review our [Privacy Policy](#) for more information on how we collect and use your data.

You have a choice in how your data is used. You may consent to the processing of your data for the purposes listed below. This consent only applies to the scope of our service. You can configure your preferences before consenting, or refuse to consent. If you don't consent, the content and advertisements you see may be less relevant.

You can also review where our partners claim a legitimate interest to use your data and, should you wish, object to them doing so here. Your objection will apply to the scope of our service. You can withdraw your consent at any time using the Privacy Choices link found at the bottom of each website page or in our application settings.

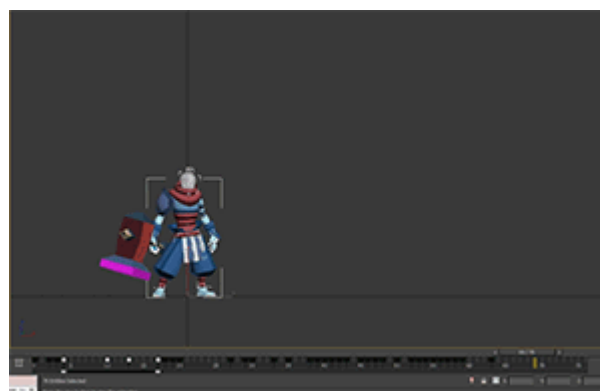
We and our partners use cookies and similar technologies for the following purposes:

Store and/or access information on a device

Personalised advertising and content, advertising and content measurement, audience research and services development

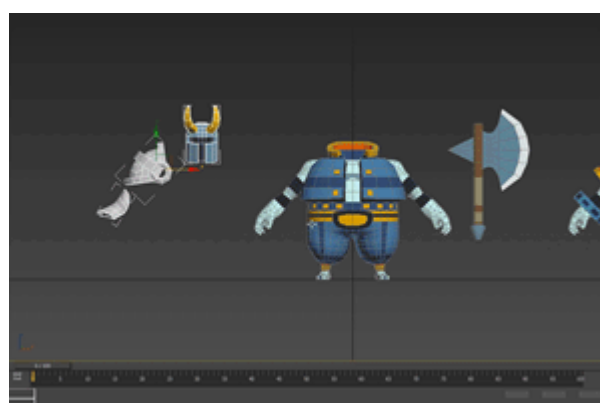
Use precise geolocation data

Actively scan device characteristics for identification

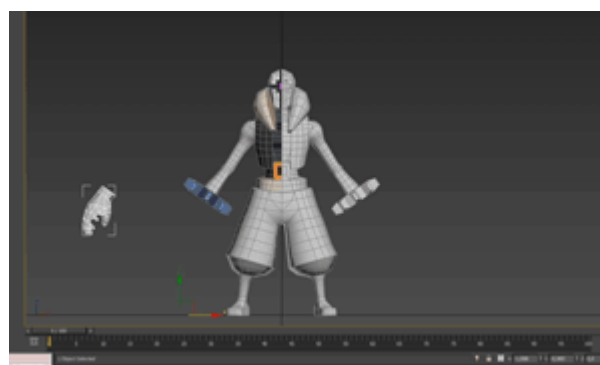


Actually, both of these retakes combined took me less time than uploading these GIFs, but that may also be because I'm a very inefficient Gif maker.

This 3D workflow also offers two other major advantages compared to a more traditional 2D process. Firstly, if I want to add some elements to an old model, for instance, a piece of armor, it's easy as pie. I just have to attach the asset to the 3D model.



But the real benefit of 3D modeling is the ability to reuse old assets, designed for previous sprites, when creating new characters (in our case, mostly monsters).



This is probably the single most useful little trick in our workflow, sparing me hundred of hours of work, so I've got that going for me, which is nice.

Why?

The image shows a screenshot of a website's Privacy Policy page. At the top, there is a blue header with the text "Privacy Choices" in white. Below the header, there is a paragraph of text explaining that the company and its third-party partners use cookies or similar technologies to store and/or access information on your devices in order to process personal data such as device identifiers and browsing data. (View our [94 partners](#).) This enables us to serve relevant content and advertising to you, and to improve the service that we provide. You can review our [Privacy Policy](#) for more information on how we collect and use your data. Below this paragraph, there is another paragraph stating that you have a choice in how your data is used. You may consent to the processing of your data for the purposes listed below. This consent only applies to the scope of our service. You can configure your preferences before consenting, or refuse to consent. If you don't consent, the content and advertisements you see may be less relevant. Below this, there is a paragraph stating that you can also review where our partners claim a legitimate interest to use your data and, should you wish, object to them doing so here. Your objection will apply to the scope of our service. You can withdraw your consent at any time using the Privacy Choices link found at the bottom of each website page or in our application settings. Below the paragraphs, there is a table with the following content:

| We and our partners use cookies and similar technologies for the following purposes: | |
|--|---|
| | Store and/or access information on a device |
| | Personalised advertising and content, advertising and content measurement, audience research and services development |
| | Use precise geolocation data |
| | Actively scan device characteristics for identification |

Although, at the time, we saw some potential in the concept, and Motion Twin has always been a company where experimentation is encouraged, even if nothing comes out of it. After the Ludum, we spend a good 3 weeks working on *ScarKrow* and at this time I already knew I couldn't keep up with the pace with a traditional workflow.

- No need to redraw each frame
- Possibility to reuse the same animation on various models
- Automatic generation of the interpolation frames to get smooth animations
- Quick and easy retakes to match the gameplay

With *Dead Cells*, we had a couple of issues to fix before we could reuse the same workflow. Firstly, with *ScarKrow*, I had to draw all the shadows by hand on all the frames, a costly process we avoided by designing a lightning system with that in mind. And *Dead Cells*, as opposed to *ScarKrow*, was a pixel art game so we also had to build a tool to “pixelate” the characters. We knew we would have those needs beforehand because we allowed ourselves to experiment in the past, so this is a practice I highly recommend.

In retrospect, the most important advantage of this workflow has to be the ease of doing retakes. The satisfying and nervous combat at the core of *Dead Cells* is the foundation the rest of the mechanics are built on. In the previous projects I worked on, where I was doing traditional hand drawn animation, we could not do retakes on animation once we had finished them. It was simply too costly, we didn't have the time. As a result the final gameplay took a big hit. And directly adjusting the speed of the animation in the code wasn't taking up the slack

In *Dead Cr*"

minutes.)

we will have

Privacy Choices

Of course

3D mode

without a

clean tha

designs!

animation

Well, I read

one way

work, but

Even if ou

with hinds

project, n

Read mo

Gama Arc

About

We and our third-party partners use cookies or similar technologies to store and/or access information on your devices in order to process personal data such as device identifiers and browsing data. (View our [94 partners](#).) This enables us to serve relevant content and advertising to you, and to improve the service that we provide. You can review our [Privacy Policy](#) for more information on how we collect and use your data.

You have a choice in how your data is used. You may consent to the processing of your data for the purposes listed below. This consent only applies to the scope of our service. You can configure your preferences before consenting, or refuse to consent. If you don't consent, the content and advertisements you see may be less relevant.

You can also review where our partners claim a legitimate interest to use your data and, should you wish, object to them doing so here. Your objection will apply to the scope of our service. You can withdraw your consent at any time using the Privacy Choices link found at the bottom of each website page or in our application settings.

We and our partners use cookies and similar technologies for the following purposes:

Store and/or access information on a device

Personalised advertising and content, advertising and content measurement, audience research and services development

Use precise geolocation data

Actively scan device characteristics for identification



Thomas Vasseur

Blogger

Source: <https://www.gamedeveloper.com/production/art-design-deep-dive-using-a-3d-pipeline-for-2d-animation-in-i-dead-cells-i>